

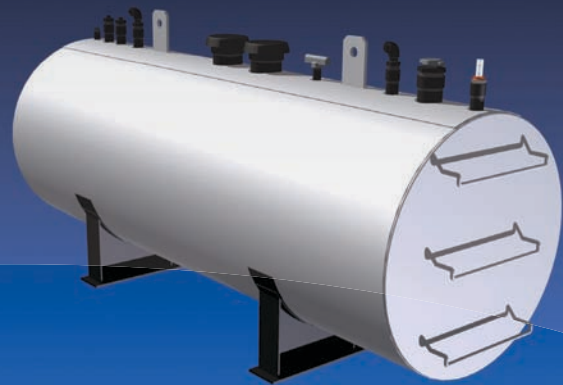
ABOVE GROUND CYLINDRICAL DOUBLE WALL STORAGE TANKS
Double Wall - UL 142

APPROX. CAPACITY (gallons)	DIAMETER	LENGTH	WEIGHT (lbs.)
300	3'- 2"	5'- 0"	690
500	4'- 0"	5'- 5"	1,070
1,000	4'- 0"	10'- 9"	2,020
1,000	5'- 4"	6'- 0"	2,200
2,000	5'- 4"	12'- 0"	3,470
3,000	5'- 4"	18'- 0"	4,900
4,000	5'- 4"	24'- 0"	6,120
4,000	6'- 0"	19'- 0"	6,920
4,000	8'- 0"	10'- 6"	6,670
5,000	6'- 0"	23'-10"	8,630
5,000	8'- 0"	13'- 4"	7,760
6,000	6'- 0"	28'- 8"	10,000
6,000	8'- 0"	16'- 0"	8,000
8,000	8'- 0"	21'- 4"	10,980
8,000	10'- 0"	14'- 0"	9,400
10,000	8'- 0"	26'- 8"	9,700
10,000	10'- 0"	17'- 0"	14,000
12,000	8'- 0"	32'- 0"	15,300
12,000	10'- 0"	20'- 6"	15,900
15,000	8'- 0"	40'- 0"	21,500
15,000	10'- 0"	25'- 6"	20,980
20,000	10'- 0"	34'- 0"	26,900
20,000	10'- 6"	31'- 0"	26,600
25,000	10'- 6"	38'- 9"	28,500
25,000	10'- 6"	38'- 9"	32,100

Note: Tank dimensions listed are based on nominal tank dimensions. The as built dimensions may vary.

STANDARD SPECIFICATIONS:

- Built per Underwriters Laboratories UL 142 standards
- Fuel supply and return drop tubes
- Low, high and leak alarms
- 2" Lockable fuel fill cap
- Fuel Level Gauge
- Tank Level Chart
- Normal and Emergency vents
- Two (2) Spare 2" NPT fittings – Shipped capped
- One (1) Spare 4" NPT fitting – Shipped capped
- Exterior cleaned and coated with one (1) coat of primer and finish coat.
- Supports will be saddles or skid


OPTIONAL SPECIFICATIONS:

- Custom sizes available upon request
- Manway
- Stairs w/ landing for access to fuel fill
- Ground level fuel fill station
- Special exterior and interior coating systems available upon request