

ABOVE GROUND CYLINDRICAL SINGLE WALL STORAGE TANKS

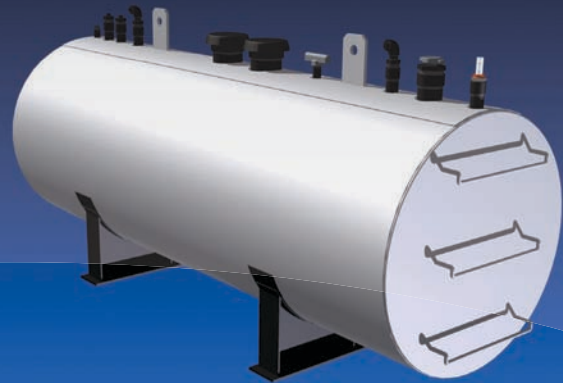
Single Wall - UL 142

APPROX. CAPACITY (gallons)	DIAMETER	LENGTH	WEIGHT (lbs.)
300	3'- 2"	5'- 0"	300
500	4'- 0"	5'- 5"	540
1,000	4'- 0"	10'- 9"	980
1,000	5'- 4"	6'- 0"	1,140
2,000	5'- 4"	12'- 0"	1,995
3,000	5'- 4"	18'- 0"	2,760
4,000	5'- 4"	24'- 0"	3,520
4,000	6'- 0"	19'- 0"	4,760
4,000	8'- 0"	10'- 6"	4,400
5,000	6'- 0"	23'-10"	5,730
5,000	8'- 0"	13'- 4"	5,250
6,000	6'- 0"	28'- 8"	6,600
6,000	8'- 0"	16'- 0"	5,950
8,000	8'- 0"	21'- 4"	7,340
8,000	10'- 0"	14'- 0"	7,280
10,000	8'- 0"	26'- 8"	8,735
10,000	10'- 0"	17'- 0"	8,400
12,000	8'- 0"	32'- 0"	10,130
12,000	10'- 0"	20'- 6"	9,520
15,000	8'- 0"	40'- 0"	12,230
15,000	10'- 0"	25'- 6"	11,090
20,000	10'- 0"	34'- 0"	13,990
20,000	10'- 6"	31'- 0"	13,870
25,000	10'- 6"	38'- 9"	16,550
25,000	10'- 6"	38'- 9"	19,910

Note: Tank dimensions listed are based on nominal tank dimensions. The as built dimensions may vary.

STANDARD SPECIFICATIONS:

- Built per Underwriters Laboratories UL 142 standards
- Fuel supply and return drop tubes
- Low and high fuel alarms
- 2" Lockable fuel fill cap
- Fuel level gauge
- Normal and Emergency vents
- Two (2) Spare 2" NPT fittings – Shipped capped
- One (1) Spare 4" NPT fitting – Shipped capped
- Exterior cleaned and coated with one (1) coat of primer and finish coat.
- Supports will be saddles or skid
- Lifting eyes designed to lift empty tank



OPTIONAL SPECIFICATIONS:

- Custom sizes available upon request
- Manway
- Stairs w/ landing for access to fuel fill
- Ground level fuel fill station
- Special exterior and interior coating systems available upon request